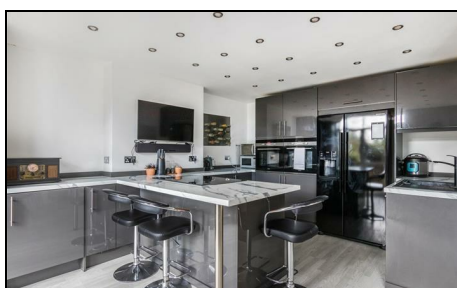


Westway Raynes Park, SW20 9LX

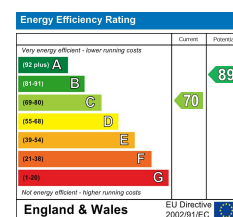
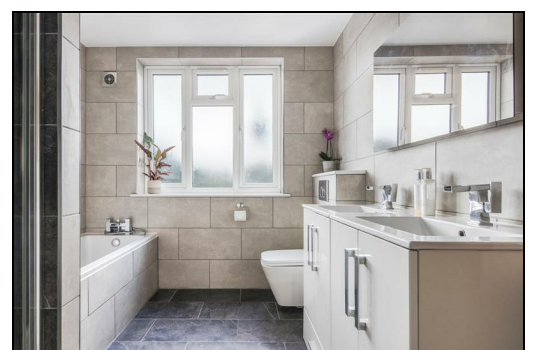
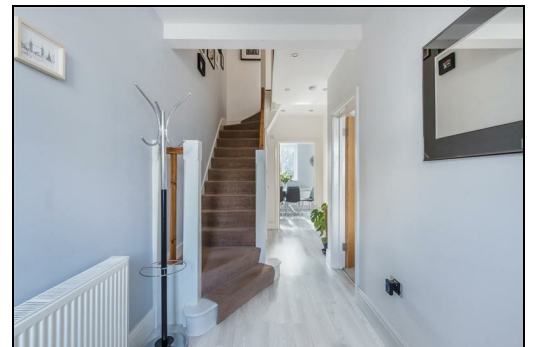
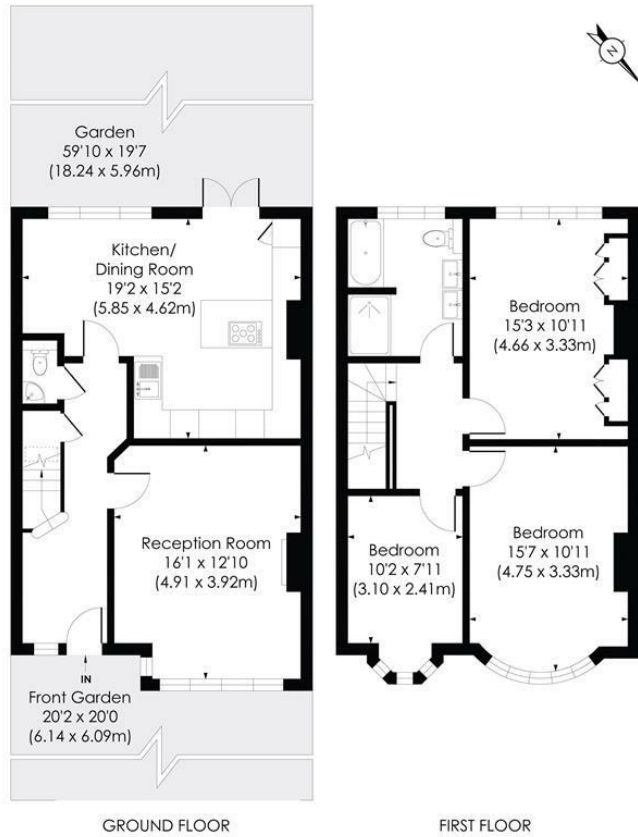
£775,000 Freehold



This spacious and beautifully presented **THREE DOUBLE BEDROOM**, halls adjoining Blay house with large South West facing garden is an ideal family home perfectly positioned for well regarded schools and ideally located for transport links and amenities from Raynes Park, Motspur Park and Morden. Off street parking to the front, large rear garden, entrance hall with downstairs W.C, a separate front reception room and a fantastic open plan kitchen/dining room with doors to the rear garden. On the first floor there are three double bedrooms and a modern family bathroom. This property also has excellent potential to extend into the loft and to the rear (S.T.P.P).

WESTWAY, SW20

Approx. Gross Internal Floor Area
1172 Sq. ft/108.88 Sq. m



© Pixangle Property Marketing Ltd. info@pixangle.com Tel: 0208 870 2118
This floor plan has been prepared for the purpose of illustration only in accordance with the latest RICS code of measuring practice and is not to scale. All measurements and areas are approximate and whilst every effort has been made to ensure the accuracy of the plan contained here, no responsibility is taken for any error, omission or misstatement.

- Three Double Bedrooms
- Halls Adjoining
- South West Facing Garden
- Fantastic Open Plan Kitchen/Dining Room
- Downstairs W.C
- Potential To Extend S.T.P.P
- Close To Well Regarded Schools
- Off Street Parking
- EPC Rating - C
- Council Tax Band - E

For Free Mortgage Quote and Best Mortgage Rates, call Ellisons Mortgage Advisor on 0208 944 9595



Although these particulars are believed to be correct, their accuracy is not guaranteed and they do not form part of any contract.

Celebrating 30 years of successful Sales and Lettings in Merton

